

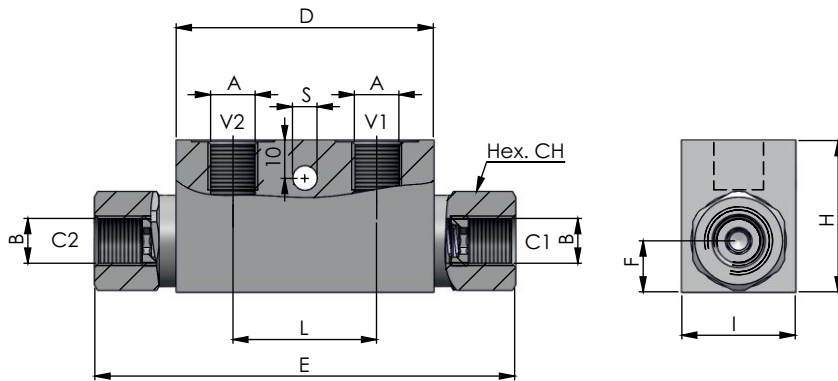
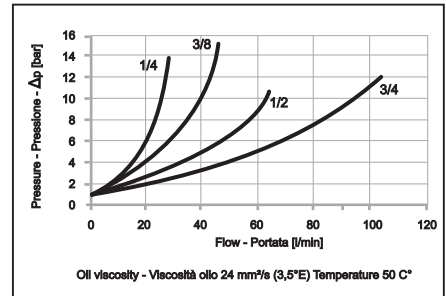
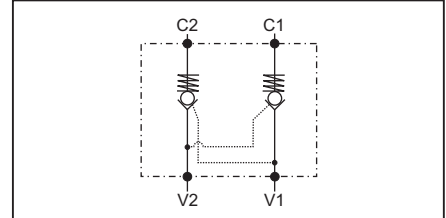
**Dual pilot-operated check valves
Valvole di blocco pilotate a doppio effetto**

Rev.03 - 09.2016

Specification:

Specifiche:

Fluid viscosity:	Viscosità Fluido :	10-550mm ² /s
Filtration:	Classe di contaminazione:	ISO code 16/13
Fluid temperature:	Temperatura fluido:	-20°C +80°C
Ambient temperature:	Temperatura ambiente:	-20°C +50°C
Galvanized Steel	Acciaio Galvanizzato	—



**Ordering code example
Esempio codice ordine**

14-M-03-A00-3-M--Y**

Code Codice	Version Versione
A00	Standard
A01	ITC.OLM

Code Codice	Adjustments Regolazioni
M	With seal on pilot piston (std) O-Ring su pilota (std)
N	Without seal on pilot piston Senza O-Ring su pilota
Conf.Standard = M	

Code Codice	Thread A Filetto A
02	1/4" BSPP
03	3/8" BSPP
04	1/2" BSPP
05	3/4" BSPP

Code Codice	Cracking Pressure Pressione inizio apertura (bar)
X	1
Y	3 (std)
Z	8
Conf.Standard = Y	

Code Codice	A	B	D	E	F	H	I	L	S	Hex ch	Pilot Ratio Rapporto di Pilotaggio	Max.Press. Press.Max (bar)	Weight Peso (kg)	Max Flow Portata Max (l/min)
14-M-03-A00-3-M-02-Y	1/4" BSPP	1/4" BSPP	68	111	13,5	40	30	38	6,5	24	4:1	350	0,674	30
14-M-03-A00-3-M-03-Y	3/8" BSPP	3/8" BSPP	68	111	13,5	40	30	38	6,5	24	4:1	350	0,672	30
14-M-03-A00-3-M-04-Y	1/2" BSPP	1/2" BSPP	80	158	18	50	30	40	8,5	30	3:1	300	1,063	50
14-M-03-A01-3-M-04-Y	1/2" BSPP	1/2" BSPP	80	144	18	50	30	40	M8	30	4:1	300	1,060	70
14-M-03-A00-3-M-05-Y	3/4" BSPP	3/4" BSPP	100	192	22	60	40	46	8,5	32	4:1	300	1,920	100